

Assembly instruction

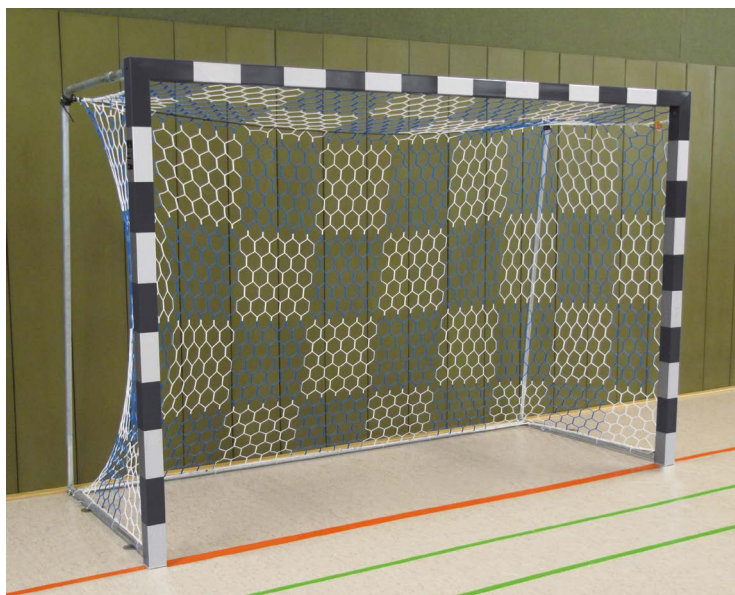
Cat.-no.: 115 0953
2392905
239 2918
113 6500
239 2400
239 2413

Sport-Thieme® Handball Goal

3x2 m, Free-standing with Fixed Net Brackets

Thanks for choosing Sport-Thieme equipment!

In order to enjoy this product please note the following instructions for safety, use and maintenance before assembly.



Cat.-no. 115 0953:

Sport-Thieme®
Handball Goal, 3x2 m,
Free-standing with Fixed
Net Brackets



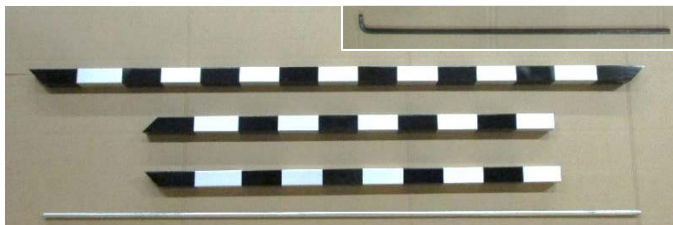
Cat.-no. 113 6500:

Sport-Thieme®
Handball Goal, 3x2 m,
standing in ground sockets.
With fixed net brackets

1. Scope of delivery

Please check the following content before assembly.

The following indicated quantities refer to 1 goal. In case of a delivery in pairs we double the amount correspondingly. Pictured colours of profiles are only samples and may differ from delivered profiles.



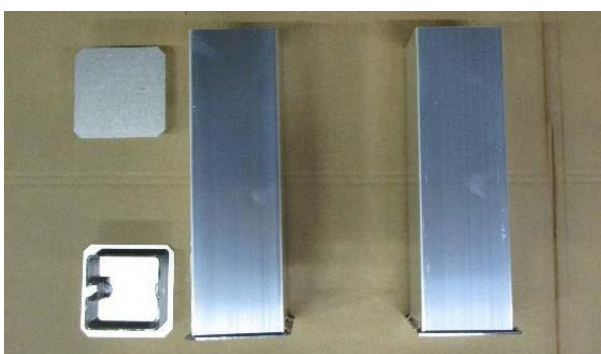
Piece	Description
1	Galvanized steel ground tube Ø 3/4"
1	Crossbar, profile 80 x 80mm
2	Upright, profile 80 x 80mm
1	Hexagon screwdriver SW6, DIN 911, length approx. 470mm (only for goal in ground sockets)



Piece	Description
2	Rigid net hoop

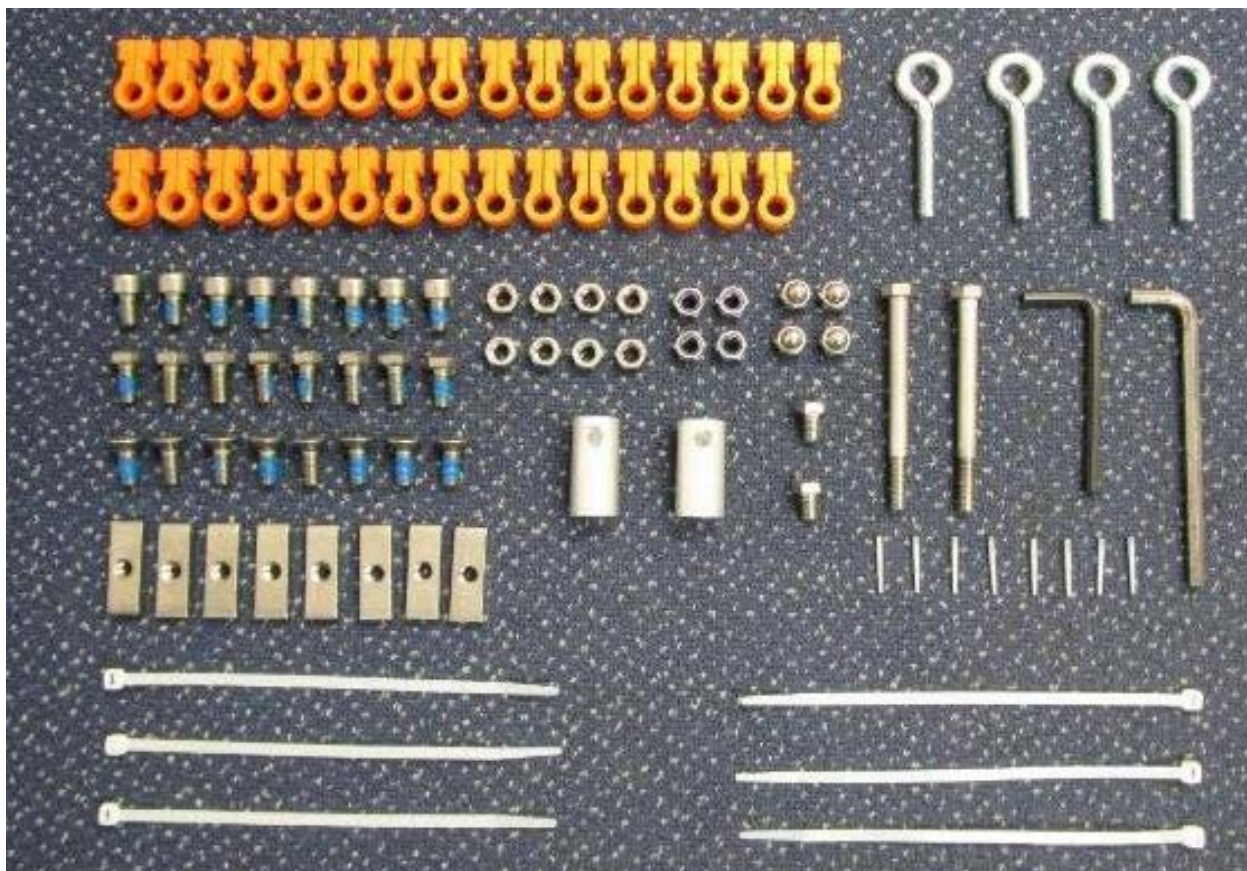


Piece	Description
2	Aluminium cast corner joint
2	Upright cap
1	Accessories



Piece	Description
	Following parts only for catalogue no. 113 6500 – goal in ground sockets
2	Ground socket, length 300 mm
2	Cap for ground socket

Accessories



Piece	Description
32	Net holder
8	Nut, 40 mm, thread M8
2	Bush with thread M8, of aluminium round tube 20 x 5 mm, length 40 mm
6	Plastic holder
8	Hexagon socket screw M8 x 20, DIN 7991
8	Hexagon socket screw M8 x 14, DIN 912
8	Hexagon screw, M8 x 16, DIN 933
2	Hexagon screw M8 x 90, DIN 931
2	Hexagon screw M8 x 12, DIN 933
2	Self-locking nut M8, DIN 985
4	Self-locking cap nut M8, DIN 986
8	Nut M8, DIN 934
4	Ring nut M8 x 50
8	Plug pin
1	Hexagon screwdriver SW5, DIN 911, black
1	Hexagon screwdriver SW6, DIN 911, length 120 mm
1	Assembly instruction

2. Assembly of the goal

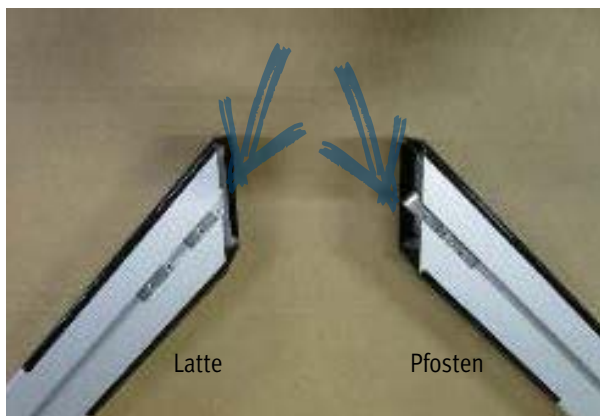
The following tools are necessary:

- 2 wrench/ring spanners 13 mm
- 1 mallet/hammer
- 1 drill \varnothing 1,5 mm
- 1 thin screw driver (for net hook fixing if necessary)

a) Assembly of crossbar/uprights:

Lay crossbar and uprights on the ground, groove facing upwards and mitres joining. Stick at each goal frame corner 4 nuts with thread M8, length 40 mm into the groove of the net hook rail (push 2 into the upright and 2 into the crossbar, see 1st picture bottom left). Stick cast corner joint into crossbar's end (see 2nd picture bottom right). Then add the upright. Take care that the internal edge of corner upright/crossbar is nearly closed. The external edge should be somewhat open, see 3rd picture bottom left. Screw 2 hexagon socket screws DIN 7991, M8 x 20 in the internal corner (see 4th picture bottom right).

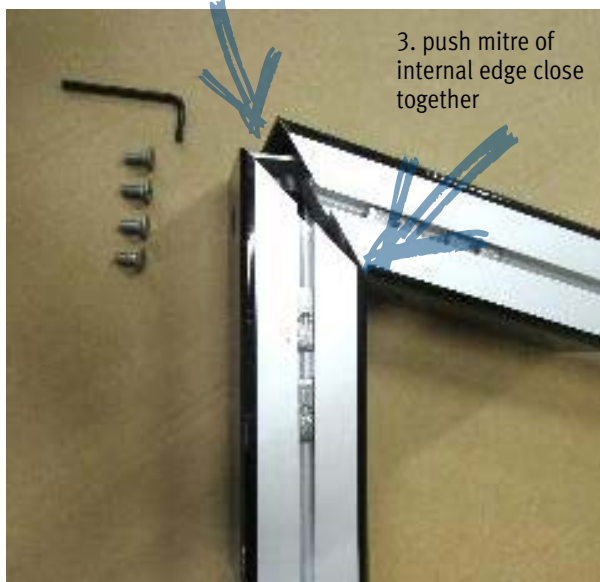
1. push nuts into the groove



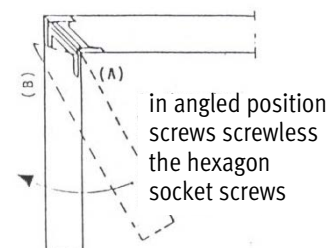
2. insert aluminium cast corner joint



leave open external edge



3. push mitre of internal edge close together



4. screw hexagon socket screws M8 x 20 slightly

Then join upright and crossbar at the external edge and adjust upright and crossbar. Screw 2 hexagon socket screws DIN 7991, M8 x 20 in the external corner and tighten all screws (see picture bottom right).



Advice: Due to production tolerances of the aluminium cast corner joints problems during adjustment of corners may possibly occur. Then shorten the stamps in the uprights with a flat file.

b) Assembly of net hoops at the top

Place rigid net hoops on the right and left side of crossbar/upright construction. Push nuts in the corners to the holes in the upper angle. Fixing of net hoop at the top: Screw 4 socket screws M8 x 16 mm, DIN 933 screwless into the speed nuts (see picture bottom left).

Between standing



c) Assembly of net hoops at the bottom

Screw from upright's inside 4 hexagon socket screws M8 x 14, DIN 912 in the bottom end of the upright with extended Allen key SW6, length 120 mm. Fix from the outside 4 nuts M8, DIN 934 (see 2nd to 4th bottom pictures). Then adjust net hoops at the top and at the bottom and tighten all screws.



Assembly of net hoops upright - for goal in ground socket, cat.no. 113 6500:

The assembly is done as described above but with extended hexagon screw-driver SW6, length approx. 470 mm (see the following pictures).



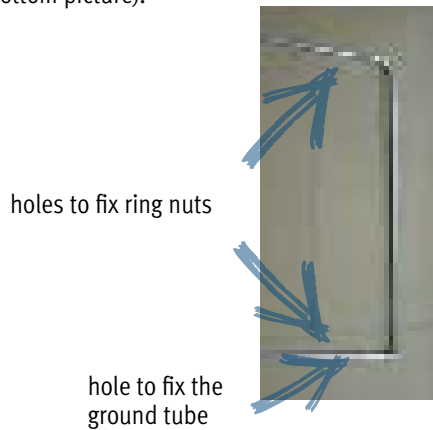
d) Assembly of caps

Stick caps in the open ends of uprights (see picture bottom left). Bore them with drill 1.5 mm through the holes provided in the uprights. Then fix plug pins with a hammer/mallet (see picture bottom right).



e) Assembly of ring nut

Stick from the inside ring nuts M8 x 50 through lateral and upper net hoop holes and fix them with cap nuts M8, DIN 986 (see bottom picture).



screw ring nut from the inside to the outside and fix with cap nut



f) Assembly of ground tube

Stick hexagon screw DIN 931, M8 x 90 through bush of aluminium tube (see picture bottom left). Then push bush into the ground tube (see picture bottom mid) and screw hexagon screw DIN 933, M8 x 12 through holes of bush and ground tube. Tighten screw (see picture bottom right).



Fix ground tube between the net hoops (see 1st picture bottom left). Screw 1 self-locking nut M8, DIN 985 so that the nut outside is flush with the screw of the bush (see picture bottom right). Then unscrew hexagon screw at the ground tube (see 2st picture bottom left). Finally push screw with self-locking nut completely into the ground tube so that the nut is directly fixed on the net hoop (see last picture bottom right). Then tighten all screws and nuts.



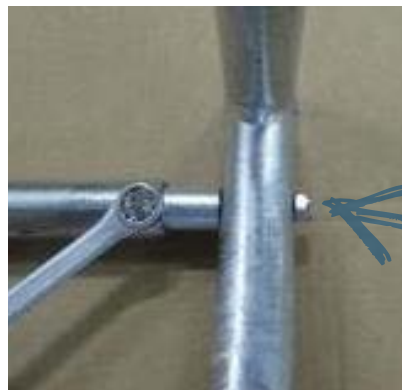
hole to fix the ground tube



1. nut outside flush with screw



2. unscrew screw



3. push screw with nut completely into the ground tube

3. Assembly of the net

a) The net is not part of the delivery.

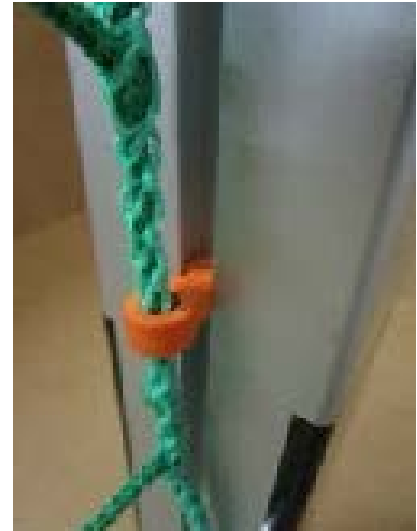
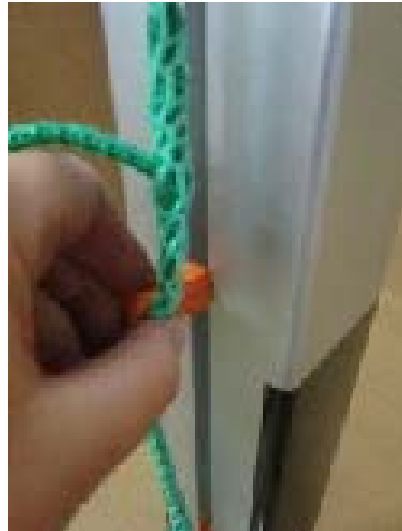
Fix net holders at the net rope. Bend open net holders a little and press rope into the holders. We recommend the following distribution of net holders:

crossbar : 16 pieces

uprights : 8 pieces each

After having mounted all net holders fix net at the goal construction. Erect the goal. Stick net holders in the net hook rail and fix them with a 90 degrees' rotation. Use a thin screw driver if necessary (please avoid damages at the goal).

Fix net with plastic holders in the bottom part of net hoops. Cut off protruding ends of plastic holders (see picture bottom right).



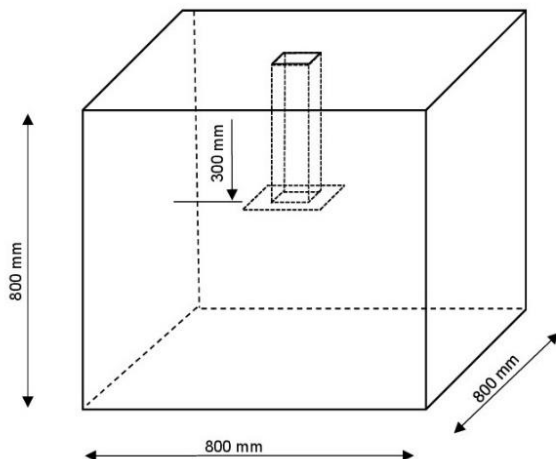
b) Fix ends of upper and lower tensioning rope at the mounted ring nuts. Cut off protruding rope ends (see bottom picture).



c) Dismantling of the net is also done by rotation of the net holders through 90 degrees. Use again a thin screw driver if necessary.

4. Assembly of the ground sockets

- a) For handball gates with a size of 3,00 x 2,00 m the distance of the ground sockets must be 3,08 m (middle socket – middle socket = center distance).
- b) Concrete ground sockets according to the sketch. Foundation dimensions: 800 x 800 x 800 mm.



- c) Do not apply an acceleration mixture or antifreeze during as these adhesives may cause damages to the ground sockets.
- d) After hardening of the concrete, the goal can be inserted into the sockets.

5. Maintenance, safety and storage instructions



This goal is only constructed for Handball and not for other purposes. Check all screwed fastenings before use and repeat it from time to time. It has to be protected against overturning at any time.

Do not climb net or goal frame. It is not allowed to fix additional parts or extensions at the goal frame which may impair the safety of the goal (according to EN 749).

Check screwed fastenings regularly and change damaged and wearing parts if need be. The unit should be maintained once a year by skilled personnel.

Notice

Due to our continuous quality check of products and equipment technical modifications are possible. To avoid damage and misuse goals have to be stored secured and in an upright position when not in use. Only use water for cleaning the surfaces. Do not use alcohol or any aggressive chemicals!

