

Basketball Unit completely welded for playground goals

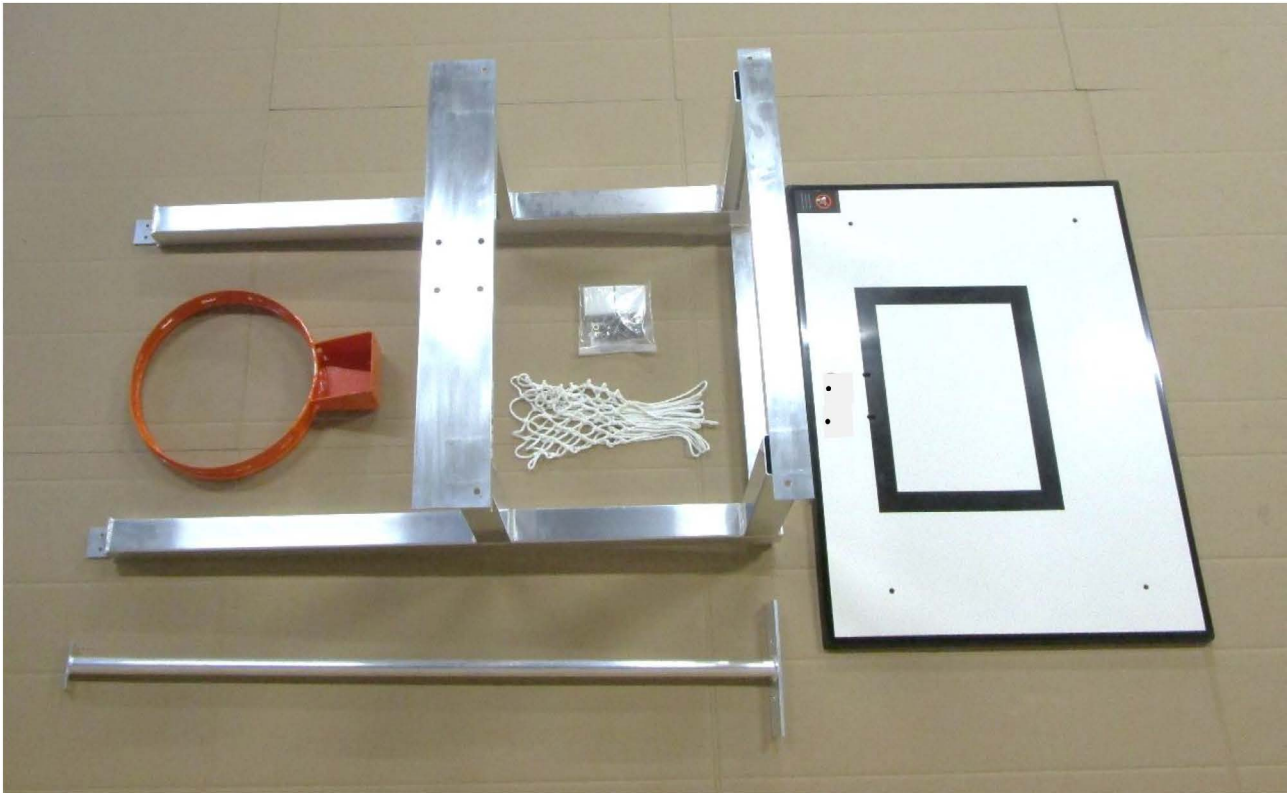
Thank you very much for choosing a Sport-Thieme product!

Please read the instructions fully before you assemble the equipment, so you can enjoy the product and safety is guaranteed. We are happy to answer any questions you may have.



1. Scope of delivery

Please check the following content before assembly.

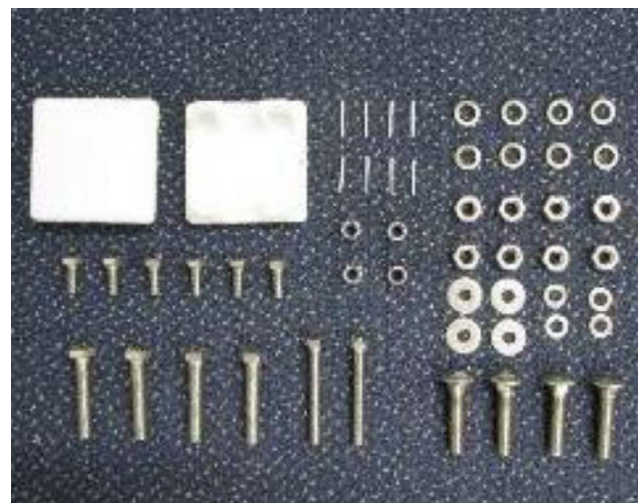


Content:

- 1x Basketball unit completely welded
- 1x Back board 120 x 90 cm
- 1x Basket
- 1x Net
- 1x Brace with welded plate
- 1x Accessories

Inhalt Zubehörbeutel:

- 2x Cap for uprights 80 x 80, white
- 8x Plug pin
- 6x Hexagon screw DIN 933, M8 x 20
- 4x Washer, DIN 125, Ø 8.4, outside diameter 16 mm
- 4x Washer, DIN 9021, Ø 8.4, outside diameter 24 mm
- 4x Self locking nut DIN 985, M8
- 4x Flat head screw DIN 603, M10 x 50
- 8x Spring washer A 10
- 8x Nut DIN 934, M10
- 4x Hexagon screw DIN 933, M10 x 55
- 2x Hexagon screw DIN 933, M 8 x 65
- 1x Assembly instruction



Assembly instructions for Art.-Nr. 111 4616/111 4629

2. Assembly of the Basketball unit

The following tools are necessary:

- 1 wrench 13 mm
- 1 wrench 17 mm
- 1 mallet/hammer
- 1 drill 1.5 mm
- 1 drilling machine or cordless screwdriver
- 1 ladder

The Basketball unit is completely welded. The remaining parts are mounted as follows:

a) Fixing of uprights' caps:

Stick caps into the profiles of the welded Basketball unit and bore plastic bars through existing holes using the 1.5 mm drill. Then fix plug pins with a hammer/mallet.



b) Assembly of back board at welded unit:

Place back board on the unit and check if all holes are congruent. Screw from the top 4 flat head screws M10 x 50, DIN 603 through holes, stick from the bottom of the back board 4 spring washers A10 and fix them with 4 nuts M10, DIN 934.



c) Assembly of Basketball unit at goal:

For this step you need the help of 2-3 persons.

Fix brace with the smaller welded plate at the angle at the top of the Basketball unit. Screw from the top 2 hexagon screws M8 x 20, DIN 933. Then stick from the bottom of the angle 2 washers \varnothing 8.4 DIN 9021 (outside diameter 24 mm), screw 2 self locking nuts M8, DIN 985 and tighten them (see the following pictures).



Oberseite Basketball-Aufsatz



Sechskantschraube M8 x 20
von oben durchstecken



Strebe zuerst an der
Oberseite des Basketball-
Aufsatzes befestigen

To mount the unit at the goal lay the goal on the ground with crossbar and uprights facing downwards. (Use board or something like that to protect the profiles). Also lay complete back board construction on the ground as shown on the following picture.

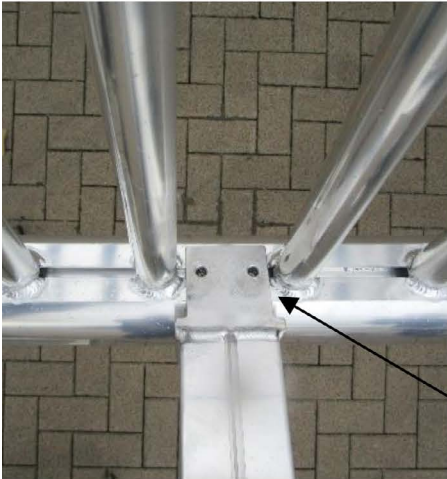


Assembly instructions for Art.-Nr. 111 4616/111 4629

To fix the unit at the goal 4 nuts are located in the groove of the crossbar. Adjust angles of the unit and nuts. Push nuts to the holes of the angles.

Now stick 4 washers $\varnothing 8.4$ (outside diameter 16 mm) on 4 hexagon screws M8 x 20, DIN 933, screw them through the holes of angles into the nuts and tighten them (see bottom pictures).

Oval goal frame:



Square goal frame:

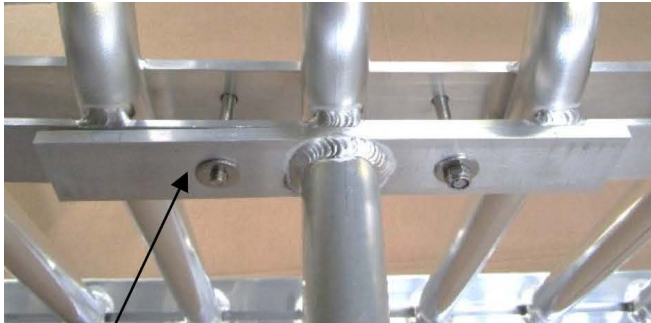


Einsteckmuttern verschieben, sodass die Bohrungen deckungsgleich sind



Assembly instructions for Art.-Nr. 111 4616/111 4629

To fix the brace at the goal adjust holes in the plate and holes in the welded flat profiles of the goal congruently. Screw from the bottom side of the goal 2 hexagon screws M8 x 65, DIN 933 through the holes. Stick 2 washers Ø 8.4 DIN 9021 (outside diameter 24 mm), screw 2 self locking nuts M8, DIN 985 and tighten them (see bottom pictures).



Fußplatte Strebe: Bohrungen deckungs-
gleich mit den Bohrungen in den
Flachprofilen am Tor ausrichten



Now the complete construction is ready to be erected on the playground.
Tighten all screwed fastenings once more.

Assembly instructions for Art.-Nr. 111 4616/111 4629

d) Assembly of basket at back board:

Place basket on the board and screw from the front side of the board 4 hexagon screws M10 x 55, DIN 933 through holes of basket and back board. Stick from the back side of the board 4 spring washers A10 and screw tightly with 4 nuts M10, DIN 934.



e) Fix the net

as shown on the following picture.



4. Maintenance, safety and storage instructions



Check screwed fastenings frequently and change damaged and wearing parts if need be. The unit should be maintained once a year by skilled personnel.

Notice: Due to our continuous quality check of products and equipment technical modifications are possible.

Do not climb frame, goal and Basketball unit. Before use check if parts are damaged. The goal has to be protected against overturning at any time. It is not allowed to fix additional parts or extensions at the goal frame which may impair the safety of goal and Basketball

unit (according to DIN EN 15312).

To avoid damage and misuse goals have to be stored secured and in an upright position when not in use.

Only use water for cleaning the surfaces. Do not use alcohol or any aggressive chemicals!