

Instruction manual – AQUALINING SET

Art.Nr. 247 2502



1
Trolley with fall protection device, bracket and securing device



2
Place right protector at the pool edge



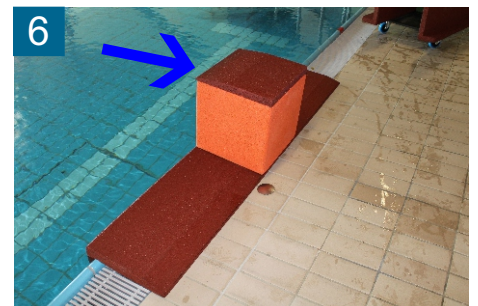
3
Place left protector at the pool edge



4
Place EPDM cube precisely in the middle



5
Place EPDM cube precisely in the middle



6
Fix edge plate precisely on EPDM cube, flat side towards the water



7
Cover



8
Remove cover



9
Unscrew protection screw



10
Remove protection screw



11
Fix allen key, turn the fixing screw



12
Tighten fixing screw manually as deep as possible
loosen allen key

The forementioned installation steps are also to be performed on the other side

Instruction manual – AQUALINING SET



13 Connect fixing screw and slackline with shackle



14 Connected side Clamping range



15 Establish same connection on the other side



16 Connected side Line range



17 Connect slackline with ratchet



18 Connect slackline with ratchet



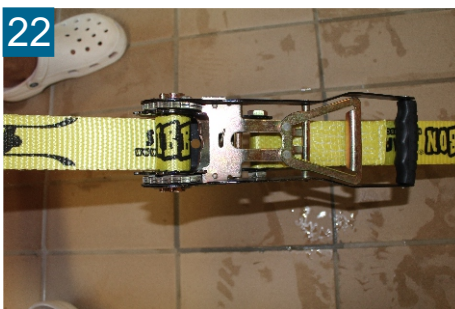
19 Look out for even alignment of abrasion protection



20 Tighten by tension and use ratchet (3 turns) before line grips



21 Adjust slackline manually Important: secure ratchet!



22 Secured ratchet

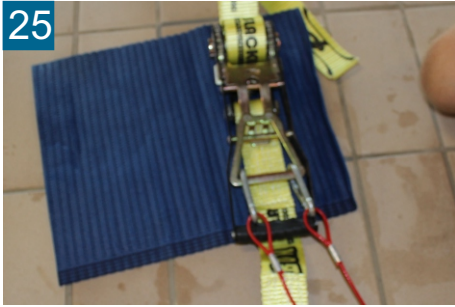


23 Safety rope

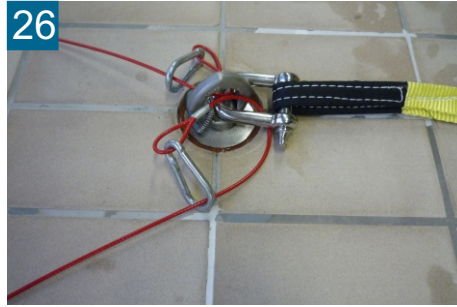


24 Put safety rope in the mount

Instruction manual – AQUALINING SET



Fix safety rope at ratchet



Fix safety rope at shackle on the other side



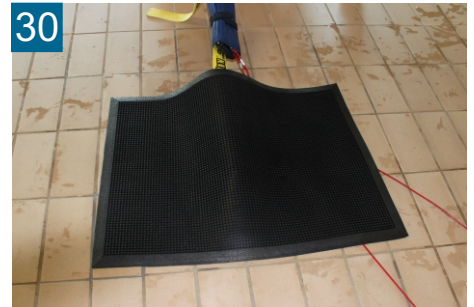
Ratchet cover



Place ratchet cover around ratchet



Fix ratchet cover with velcro fastener



Place protection mat on both sides



Enjoy Aqualining!

Manual AQUALINING SET

1. Assembly, dismantling and installation only by certified experts
2. Monitoring of use
3. Just one person is authorized to use slackline
4. Jumping or swimming is not allowed next to the slackline within a distance of 4 metres to the left and the right
5. Avoid descending and walking backwards at the edge of the pool
6. Use is not allowed without protection elements
7. Before storage dry wet pieces, especially the slackline
8. Use of another slackline such as brand Gibbon from ID Sports is not allowed
9. The DIN 79400 must be observed. These standards are generally binding for all natatoriums.